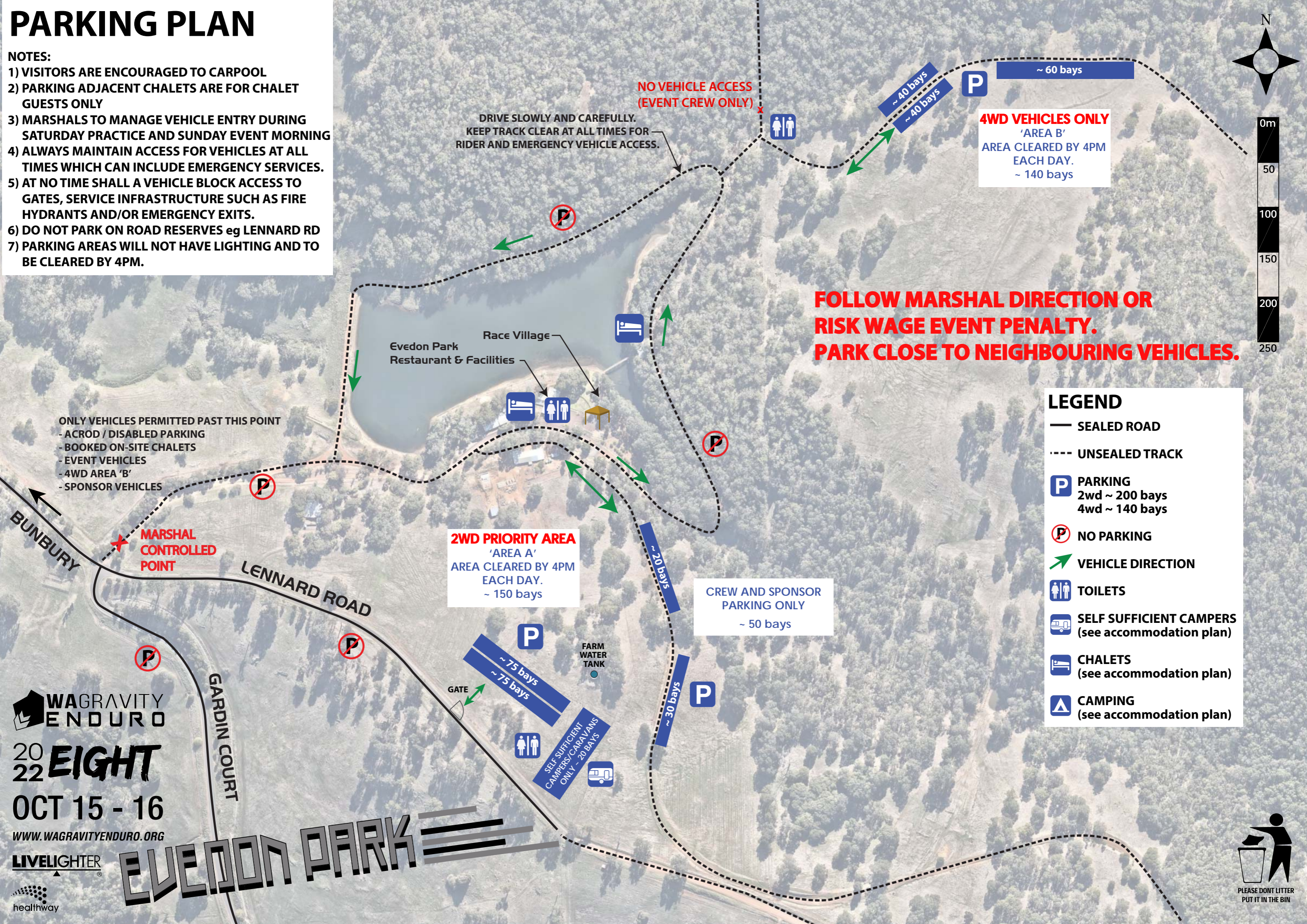


PARKING PLAN

NOTES:

- 1) VISITORS ARE ENCOURAGED TO CARPOOL
- 2) PARKING ADJACENT CHALETs ARE FOR CHALET GUESTS ONLY
- 3) MARSHALS TO MANAGE VEHICLE ENTRY DURING SATURDAY PRACTICE AND SUNDAY EVENT MORNING
- 4) ALWAYS MAINTAIN ACCESS FOR VEHICLES AT ALL TIMES WHICH CAN INCLUDE EMERGENCY SERVICES.
- 5) AT NO TIME SHALL A VEHICLE BLOCK ACCESS TO GATES, SERVICE INFRASTRUCTURE SUCH AS FIRE HYDRANTS AND/OR EMERGENCY EXITS.
- 6) DO NOT PARK ON ROAD RESERVES eg LENNARD RD
- 7) PARKING AREAS WILL NOT HAVE LIGHTING AND TO BE CLEARED BY 4PM.



NO VEHICLE ACCESS (EVENT CREW ONLY)

DRIVE SLOWLY AND CAREFULLY.
KEEP TRACK CLEAR AT ALL TIMES FOR RIDER AND EMERGENCY VEHICLE ACCESS.

4WD VEHICLES ONLY
'AREA B'
AREA CLEARED BY 4PM EACH DAY.
~ 140 bays

**FOLLOW MARSHAL DIRECTION OR RISK WAGE EVENT PENALTY.
PARK CLOSE TO NEIGHBOURING VEHICLES.**

ONLY VEHICLES PERMITTED PAST THIS POINT
- ACROD / DISABLED PARKING
- BOOKED ON-SITE CHALETs
- EVENT VEHICLES
- 4WD AREA 'B'
- SPONSOR VEHICLES

2WD PRIORITY AREA
'AREA A'
AREA CLEARED BY 4PM EACH DAY.
~ 150 bays

CREW AND SPONSOR PARKING ONLY
~ 50 bays

LEGEND

- SEALED ROAD
- - - UNSEALED TRACK
- P** PARKING
2wd ~ 200 bays
4wd ~ 140 bays
- P** NO PARKING
- ➔** VEHICLE DIRECTION
- ♂ ♀** TOILETS
- 🚐** SELF SUFFICIENT CAMPERS (see accommodation plan)
- 🛖** CHALETs (see accommodation plan)
- ⛺** CAMPING (see accommodation plan)

WAGRAVITY ENDURO
2022 EIGHT
OCT 15 - 16
WWW.WAGRAVITYENDURO.ORG



EVEDON PARK

