

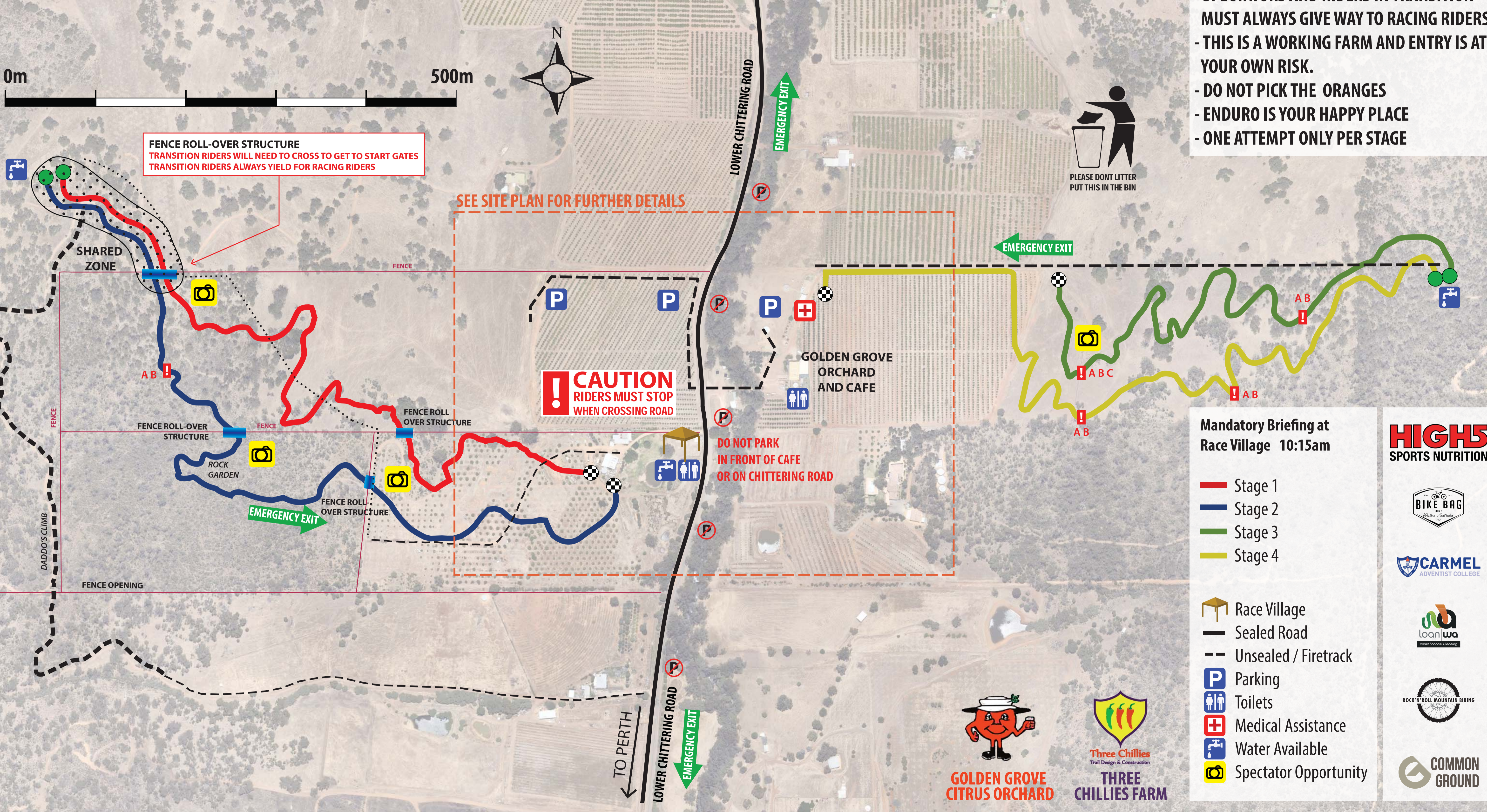
# GOLD.GROVE

MAY 07



# 2017

- FOR MAXIMUM ENJOYMENT, PLEASE NOTE THESE NOTEY NOTES:**
- CAR-POOL WHERE POSSIBLE
  - NO WIPPETS U13 RACE
  - DO NOT PARK IN FRONT OF CAFE
  - SEE SITE PLAN FOR FURTHER DETAILS
  - SPECTATORS AND RIDERS IN TRANSITION MUST ALWAYS GIVE WAY TO RACING RIDERS
  - THIS IS A WORKING FARM AND ENTRY IS AT YOUR OWN RISK.
  - DO NOT PICK THE ORANGES
  - ENDURO IS YOUR HAPPY PLACE
  - ONE ATTEMPT ONLY PER STAGE



**Mandatory Briefing at Race Village 10:15am**

- Stage 1 (Red line)
- Stage 2 (Blue line)
- Stage 3 (Green line)
- Stage 4 (Yellow line)

- Race Village (Tent icon)
- Sealed Road (Solid line)
- Unsealed / Firetrack (Dashed line)
- Parking (P icon)
- Toilets (Toilet icon)
- Medical Assistance (+ icon)
- Water Available (Water tap icon)
- Spectator Opportunity (Camera icon)

**HIGH5 SPORTS NUTRITION**

**BIKE BAG**

**CARMEL ADVENTIST COLLEGE**

**loan1wa**

**ROCK'N'ROLL MOUNTAIN BIKING**

**COMMON GROUND**

**GOLDEN GROVE CITRUS ORCHARD**

**THREE CHILLIES FARM**

WEMBLEY CYCLES

GIANT

TO PERTH